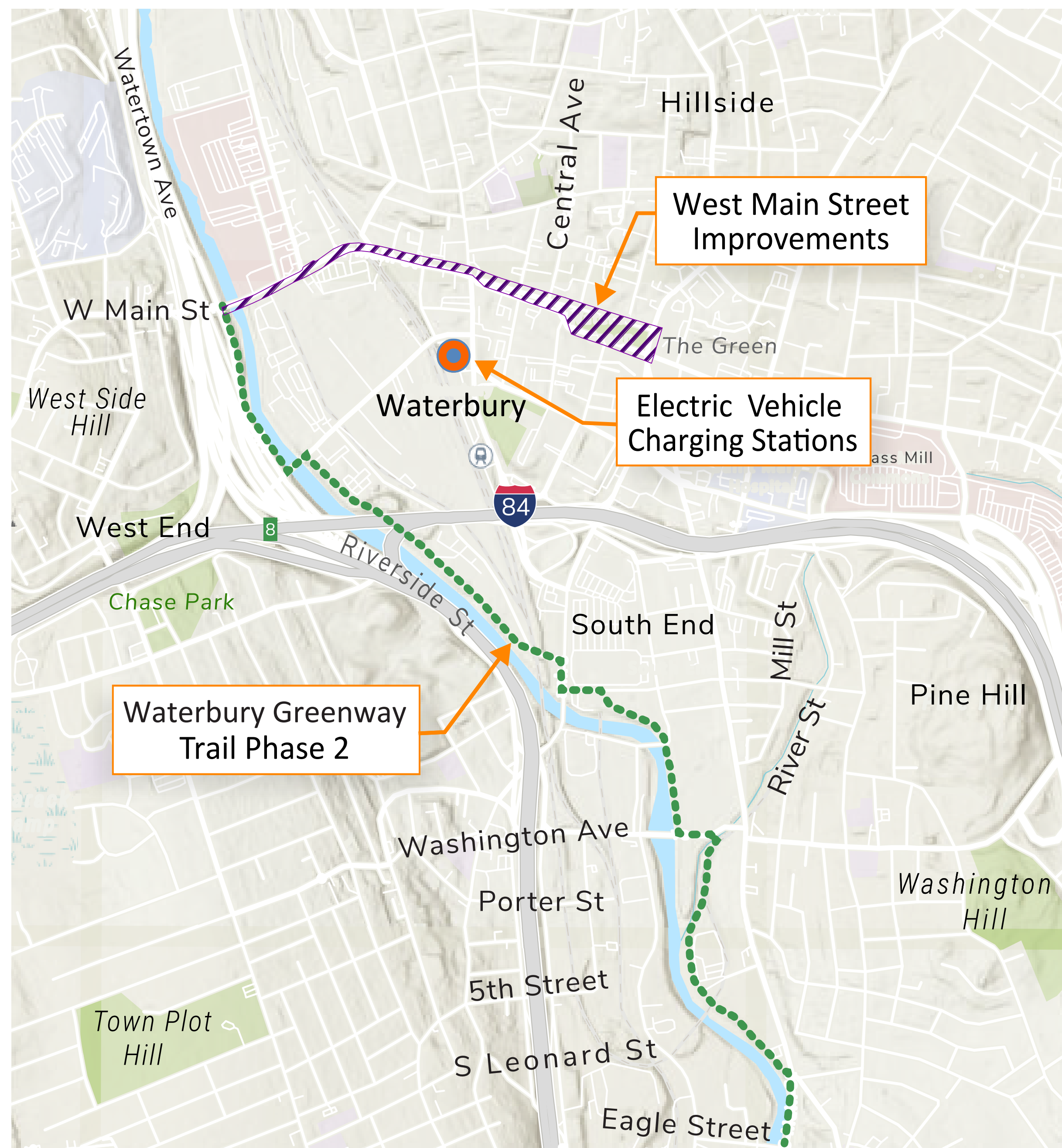


# West Main St. Improvements (RAISE Component 2)

## Project Overview

The City of Waterbury is undertaking the construction of the Waterbury Active Transportation and Economic Resurgence (W.A.T.E.R.) Phase II Project – West Main Street Improvements under a RAISE Grant administered by the Federal Highway Administration (FHWA). The project continues the planning and design work which began under the 2022 West Main Street Study. The improvements would be implemented on West Main Street between Riverside Street and the Waterbury Green.



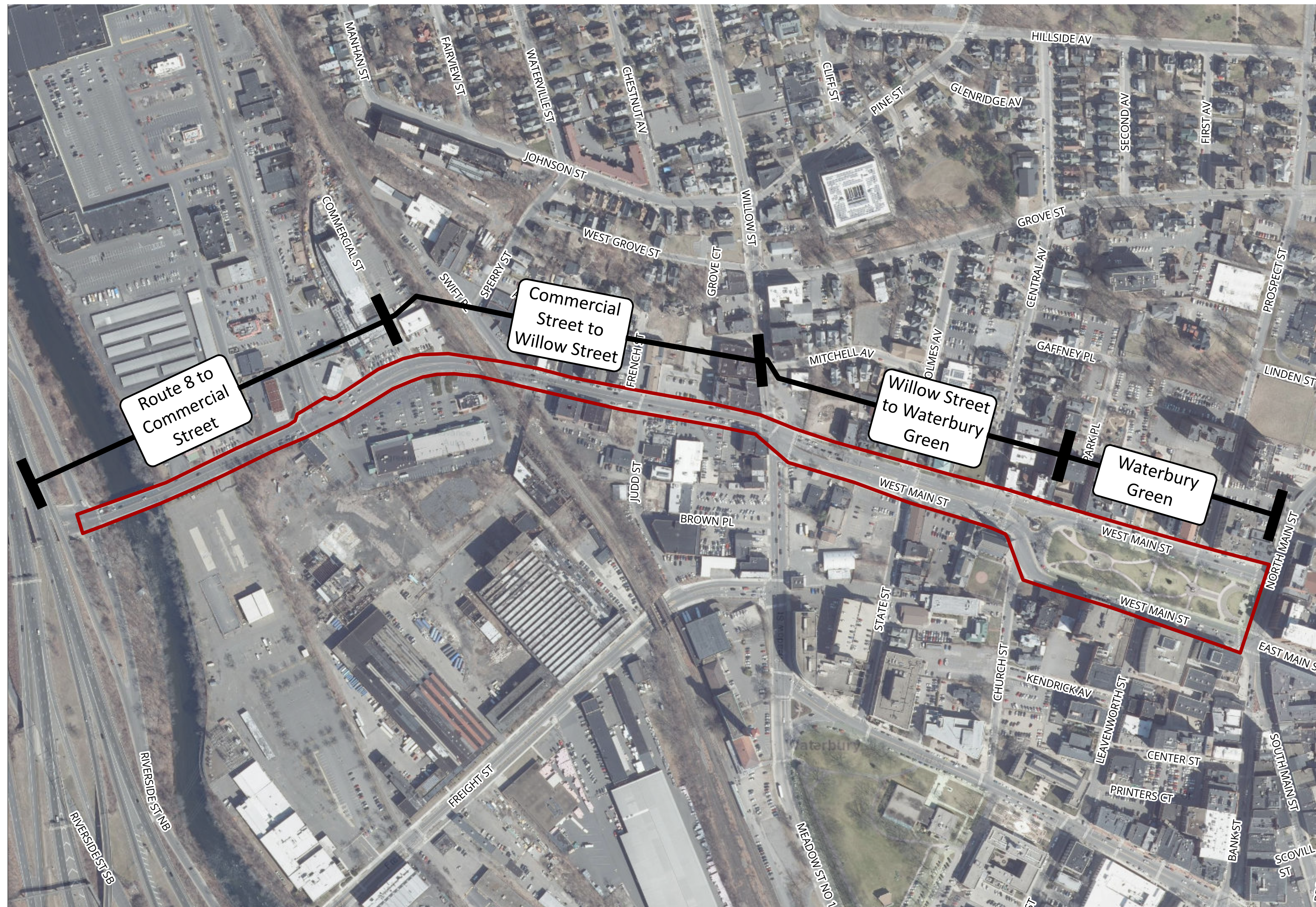
## Project Goals

- Improve safety and operational conditions for all users
- Provide enhanced access for pedestrians and bicyclists along major east-west travel corridor
- Connect Downtown Waterbury to the Greenway Trail



# West Main St. Improvements (RAISE Component 2)

## West Main Street Planning Process



### West Main Street Study (2021-2022)

- Comprehensive analysis of existing conditions
- Robust public engagement process
- Developed concepts to address deficiencies along corridor
- Recommended road diet

### West Main Street Improvements Project (Current)

- Next step in process
- Design is ongoing
- National Environmental Policy Act (NEPA) and Section 106 review underway

Summer 2023 - Summer 2025  
Design

Fall 2025 - Summer 2026  
Bid and Award Phase

Spring 2027 - Fall 2028  
Construction

Late Fall 2028  
Open to the Public



# West Main St. Improvements (RAISE Component 2)

## Existing Conditions

- Main corridor connecting Route 8 to the City Center
- Serves as a major bus route with a central bus stop servicing 12 routes
- Waterbury Green anchors the eastern end of the corridor, with surrounding civic and office uses
- Active pedestrian, bicycle and shopping district between Sperry and Meadow Streets
- Larger chain retail, service-based businesses, and industrial and warehousing uses between Sperry Street and the river
- Lacks adequate bicycle, pedestrian and transit accommodations
- Unnecessary roadway width and number of vehicle travel lanes



Looking east on West Main Street along northern edge of Waterbury Green



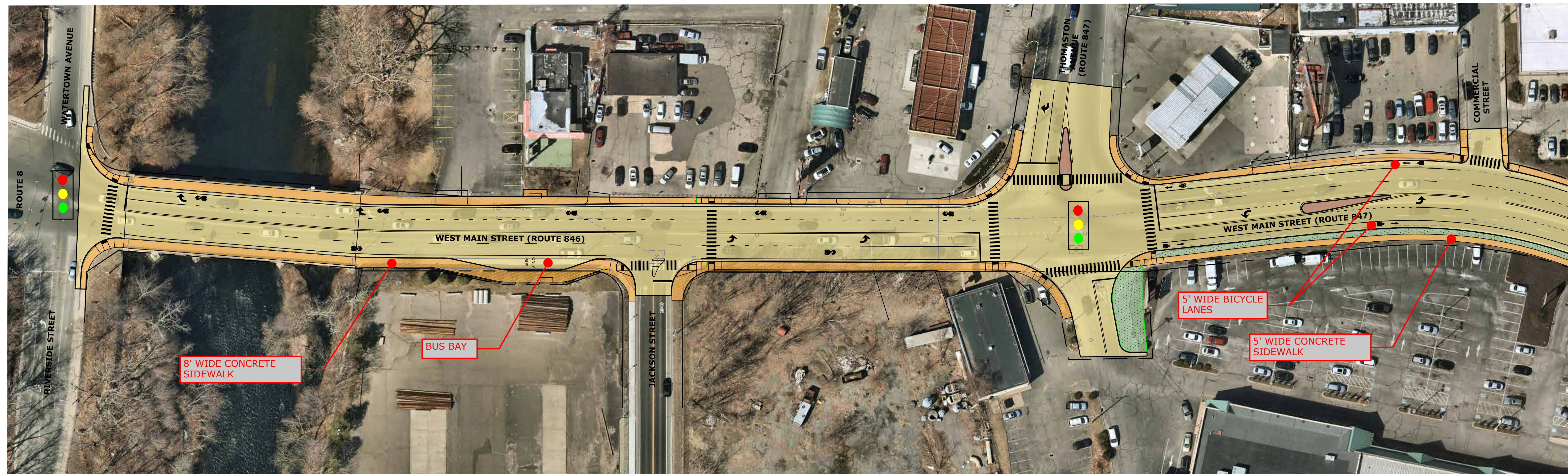
Looking east on West Main Street from Willow Street



Looking west on West Main Street from Commercial Street

# West Main St. Improvements (RAISE Component 2)

## Route 8 to Commercial Street



LEGEND	
	PAVED ROAD
	CONCRETE SIDEWALK
	BRICK PAVERS
	STAMPED CONCRETE
	BIKE PATH
	PLANTED AREA
	ON STREET PARKING

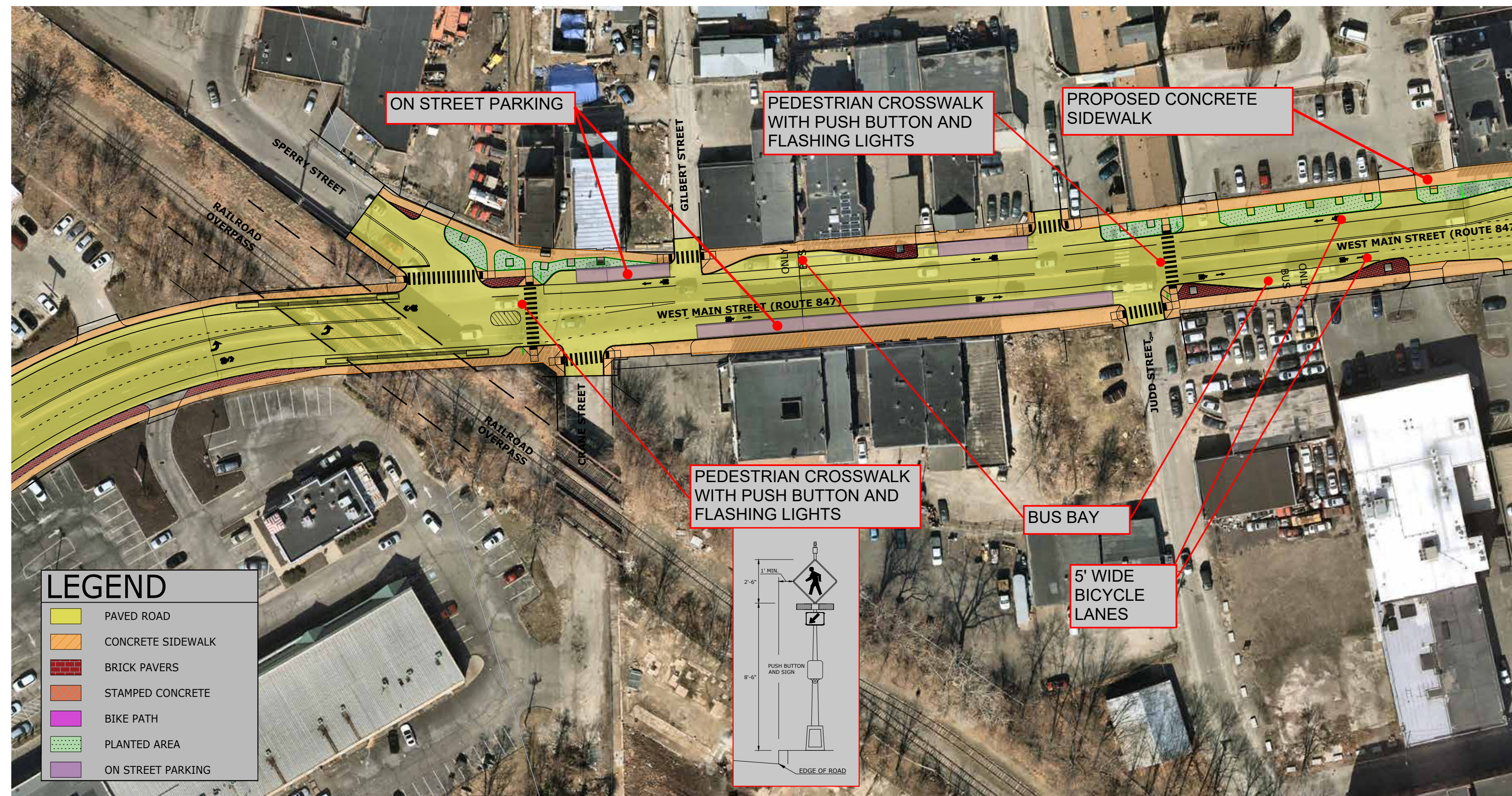
### Design Features:

- Narrows West Main Street and provides one through lane of traffic in each direction
- Provides a bus stop pull-off
- Identifies the south sidewalk between Riverside Street to Jackson Street as a continuation of the Greenway Trail
- Provides a bicycle shared lane from Riverside Street to the railroad bridge
- Introduces a green strip on the south side of West Main Street between Thomaston Avenue and the railroad bridge

# West Main St. Improvements (RAISE Component 2)

## Commercial Street to Willow Street

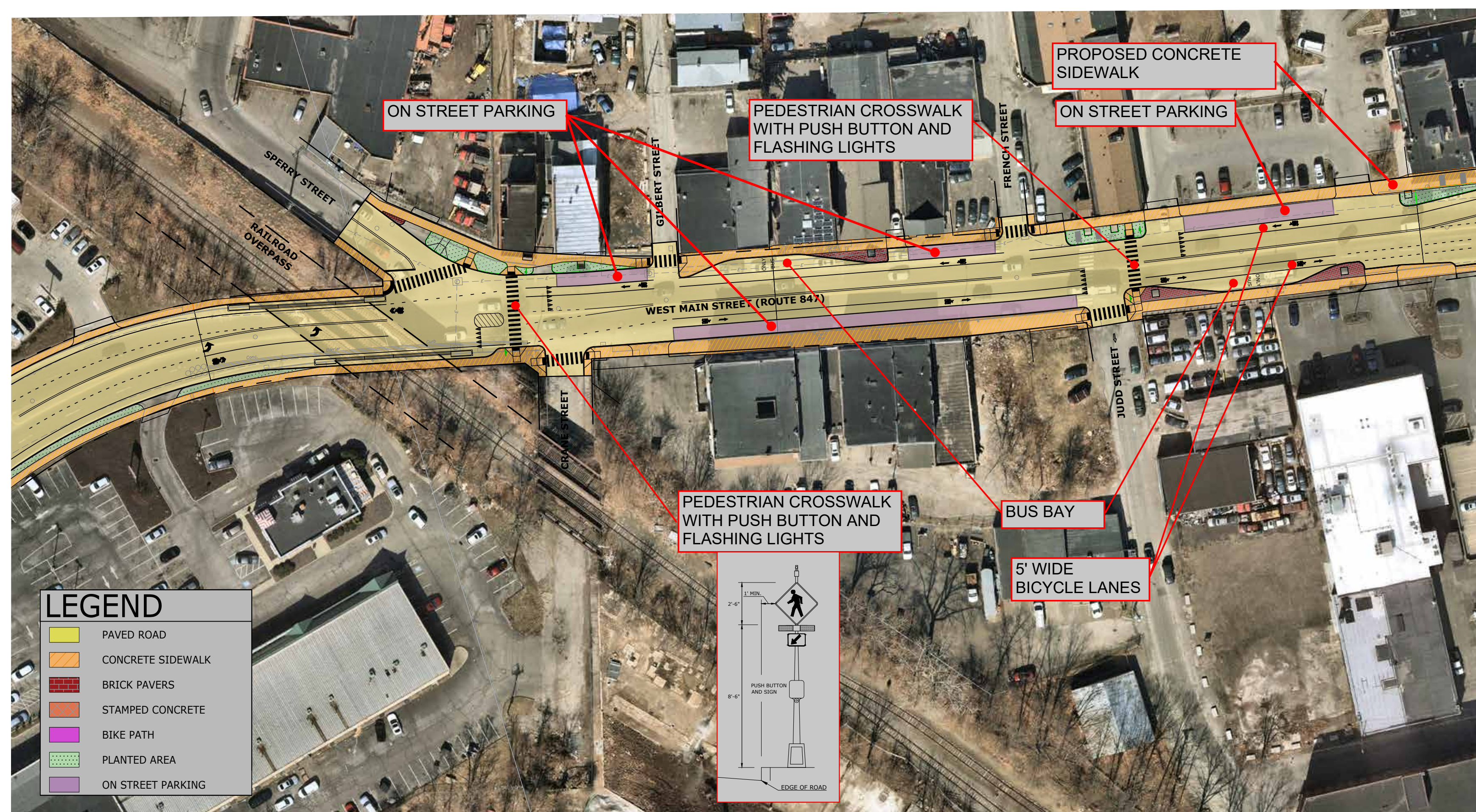
### Alternative A



### Design Features:

- One through traffic lane in each direction
- Exclusive bike lanes in each direction
- On-street parking along the north and south sides wherever possible
- Bus pull-off at bus stop
- Crosswalks with rectangular rapid flashing beacons

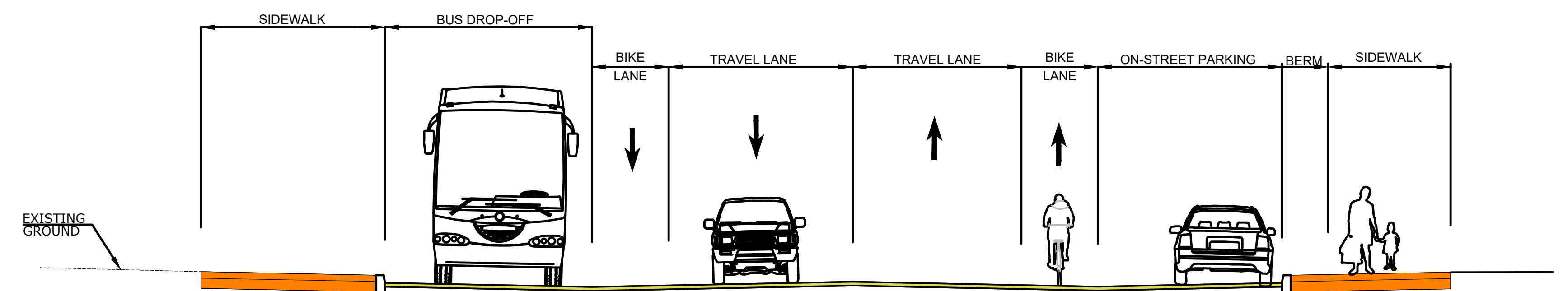
### Alternative B



### Additional Benefits of Alternative B:

- Provides more on-street parking

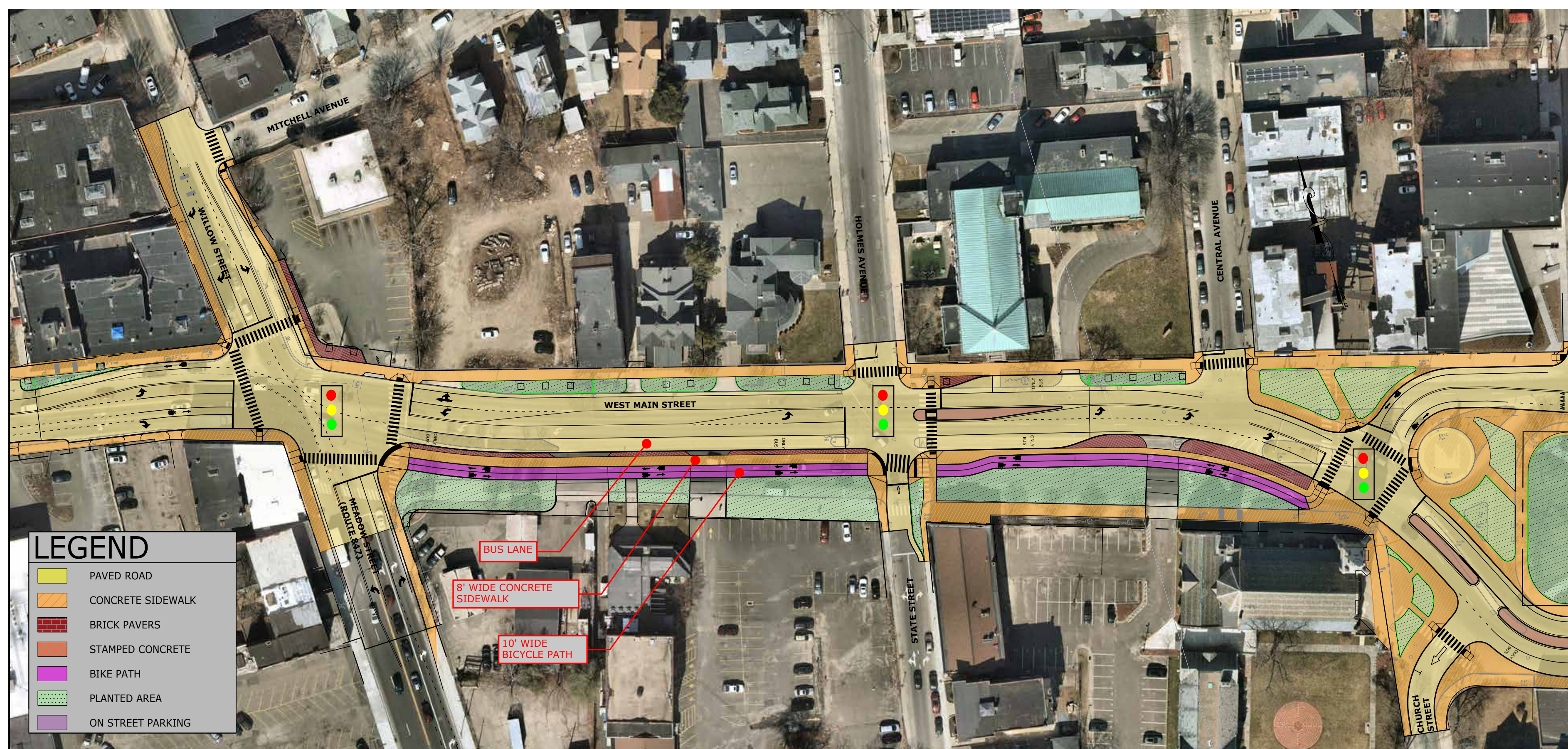
### Section at Bus Drop Off



# West Main St. Improvements (RAISE Component 2)

## Willow Street to Waterbury Green

### Alternative A



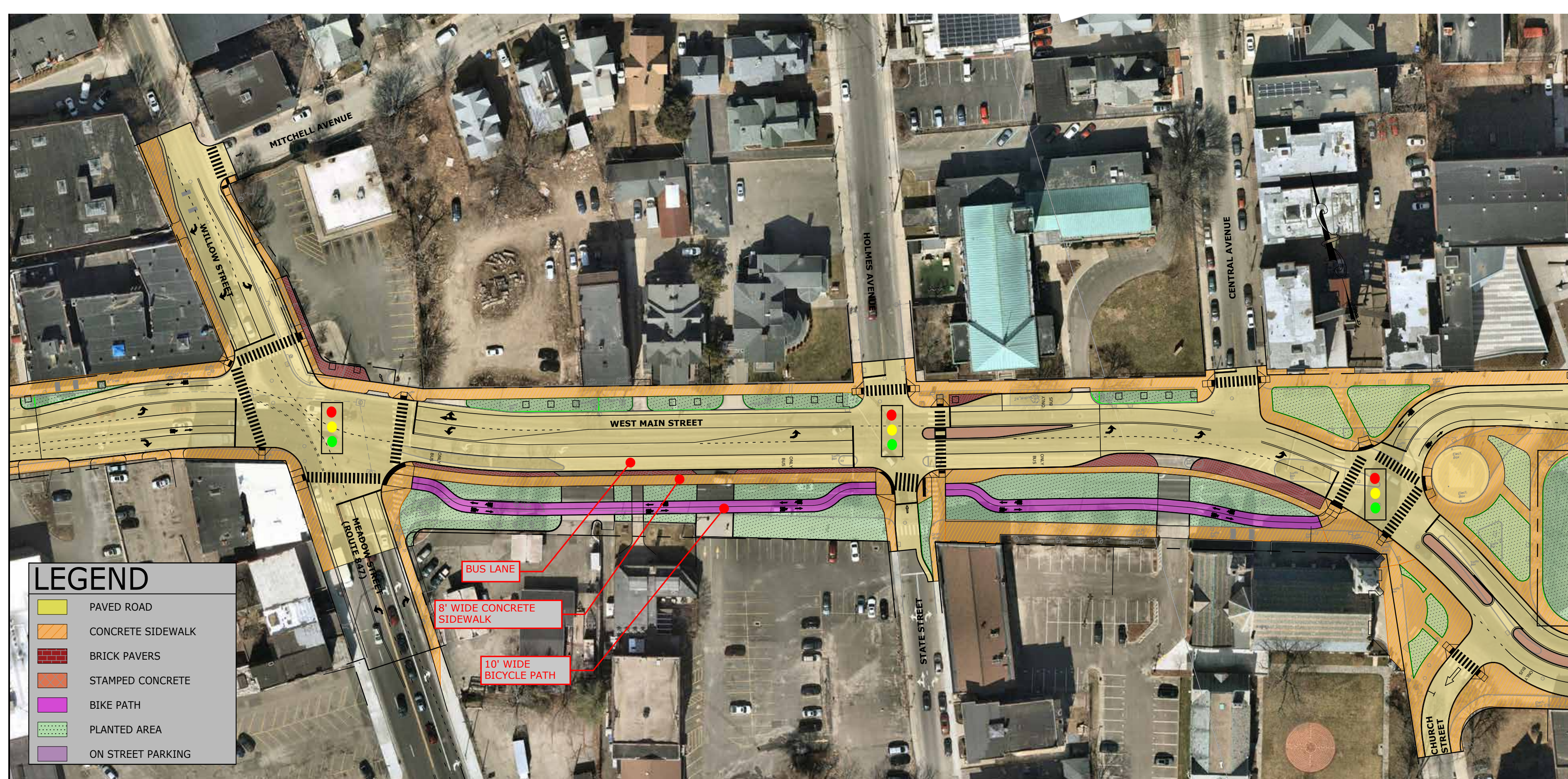
### Design Features:

- Separated bike path between Willow Street and Waterbury Green
- Creates attractive entryway to the Waterbury Green and Downtown
- Takes advantage of City-owned land along West Main Street

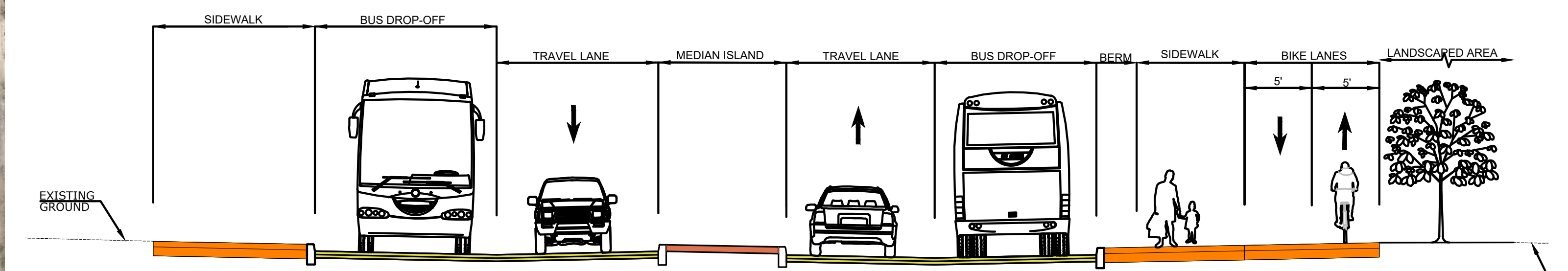
### Additional Benefits of Alternative B:

- Bike path away from pedestrians
- Provides option for future tree-lined boulevard along bike path

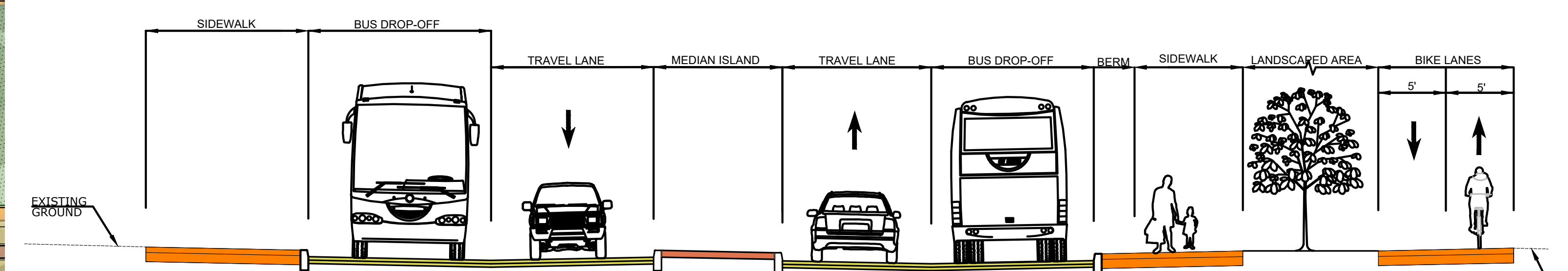
### Alternative B



### Section - Alternative A



### Section - Alternative B

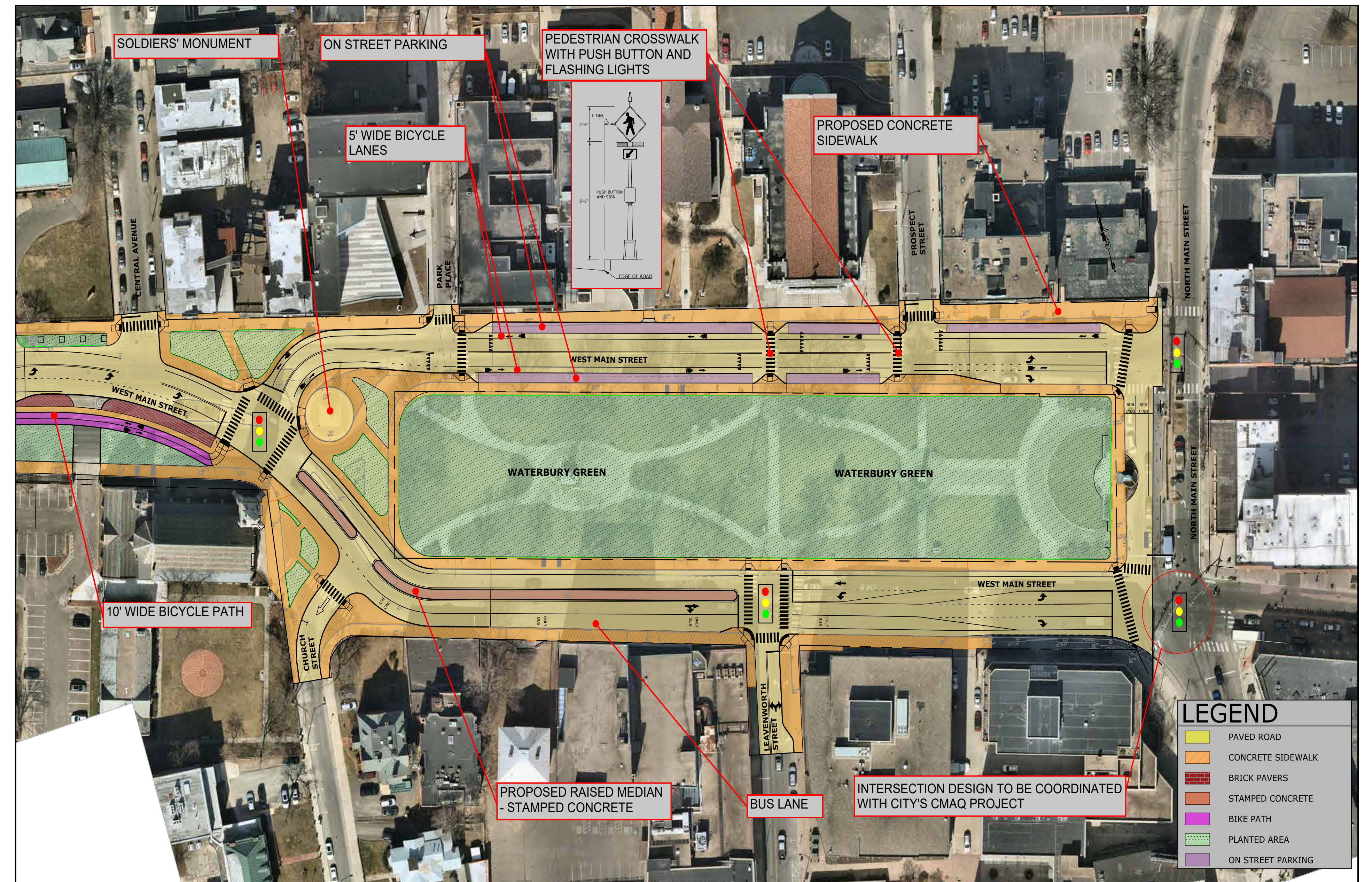


# West Main St. Improvements (RAISE Component 2)

## Waterbury Green



Existing Intersection



### Design Features:

- Improves traffic flow at monument intersection
- Removes traffic that separates monument from the Waterbury Green
- Increases greenspace
- Locates bike lane away from bus routes and bus stops
- Adds crosswalks with rectangular flashing beacons

