



# Washington Avenue Realignment Design

Optimizing Traffic Movement and Enhancing Community Connectivity



# The WARD Team



**Stacey Epps**  
Vice President

**Vlad Kaminsky, PE**  
Construction Manager

**Arnold Rubenstein, PE**  
Traffic Engineer

**Grace Webb, EIT**  
Civil Engineer

**Hidaliza Espinal**  
Office Engineer  
(Spanish Speaking)



**Tory Man, LEP**  
Director of Environmental  
Services

**Dan Vill, PE**  
Project Manager



**James Nardozzi**  
Executive Director

**Ronald Cassella**  
Vice President of Operations  
and Construction

**Zach Keith**  
Project Manager

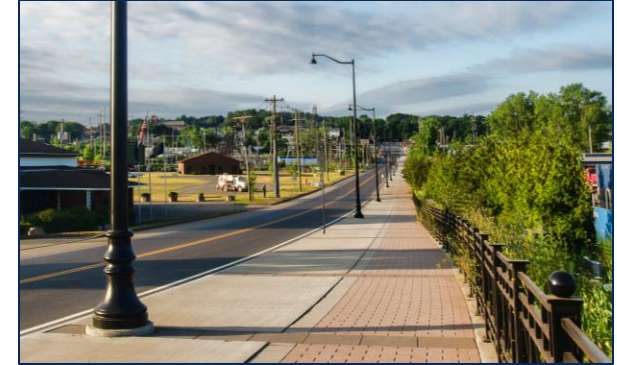
# Project Purpose and Goals



**Improve truck turning movements**



**Improve pedestrian safety and accessibility**



**Streetscape Improvements**



**Shorter Signal Queues**



**Utility Improvements**



**Reduce Crashes**



# Existing Site Map (Added after meeting)

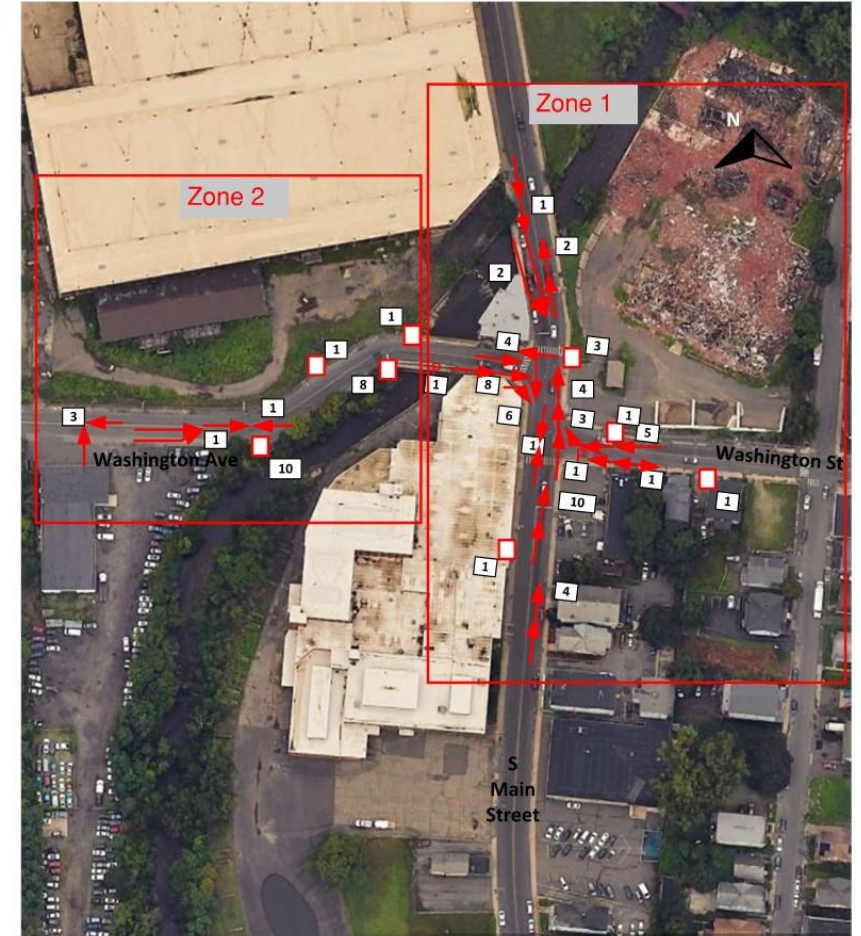


# Collision Diagram (Added after meeting)

Figure T-2: Collision Diagram

## COLLISION DIAGRAM

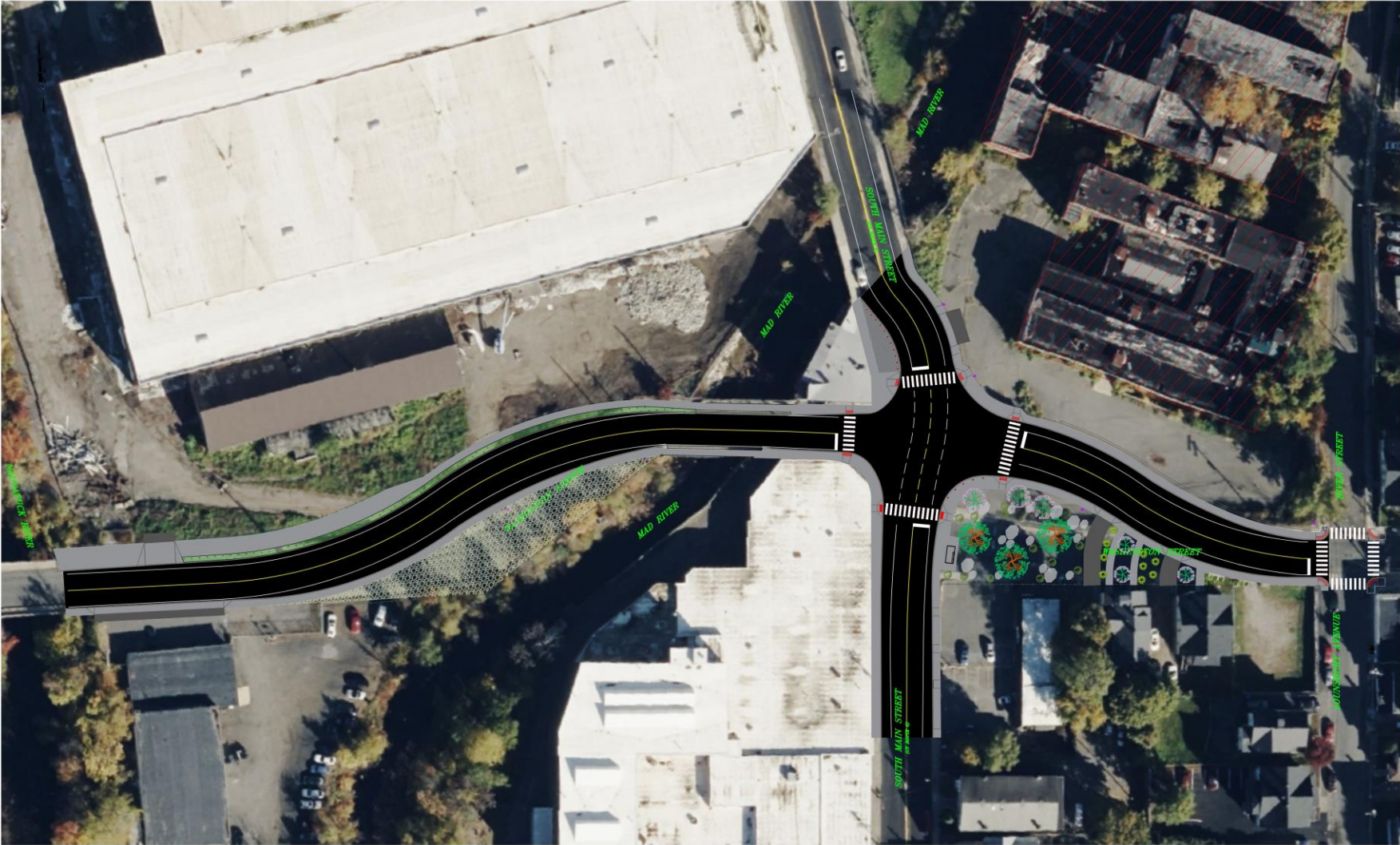
MUNICIPALITY: ----	CITY: Waterbury	FILE: WATERBURY
INTERSECTION: Washington Ave	FROM: 1/1/19 TO: 11/14/24	BY: APAUL
PERIOD: 5 YEARS		DATE: 01/14/2025



SYMBOLS		MANNER OF COLLISION	
	MOVING VEHICLE		REAR END
	TURNING VEHICLE		LEFT TURN
	BACKING VEHICLE		LEFT TURN
	PARKED VEHICLE		SIDE SWAP
	TOTAL NUMBER		OUT OF CONTROL
	PEDESTRIAN		HEAD ON
	BICYCLIST		RIGHT TURN
	ANIMAL		RIGHT TURN
	FIXED OBJECT		RIGHT ANGLE
	FATAL		SIDE SWIPE



# Road Realignment Plan



# Utility Upgrades: Water, Sanitary, and Storm Systems

- The existing water main, installed in 1907, will be replaced as part of the project to improve water service reliability and capacity for the project area.
  - A temporary bypass will be constructed to minimize disruptions to residents and local businesses during the replacement.
- The existing sanitary sewer, installed in 1887 & 2001, will be lined using CIPP to increase the lifespan of the existing system.
- The existing storm sewer, installed in 1949, will be upgraded to improve the system's capacity.
- Test pits will be conducted at the beginning of project to prevent unforeseen delays during utility installation.





# Utility Relocation: What to Expect

- Residents can expect minimal to no interruptions in service during the relocation process.
- Timely coordination with utility providers will ensure smooth transitions and minimal inconvenience.
- Proposed relocations are outside the existing roadway, most relocation can proceed with minimal disruption to traffic.





# Construction Schedule and Traffic Impacts

- Construction is set to begin in **June 2025**, with an anticipated completion date in **July 2026**.
- Detours will be established in areas affected by construction to ensure smooth traffic flow.
- Access to businesses will remain uninterrupted.
- General public will be notified of any detours through VMS signage at least 2 weeks prior to the start of any activities.
- The City will use its website to inform the public about upcoming detours and project updates.

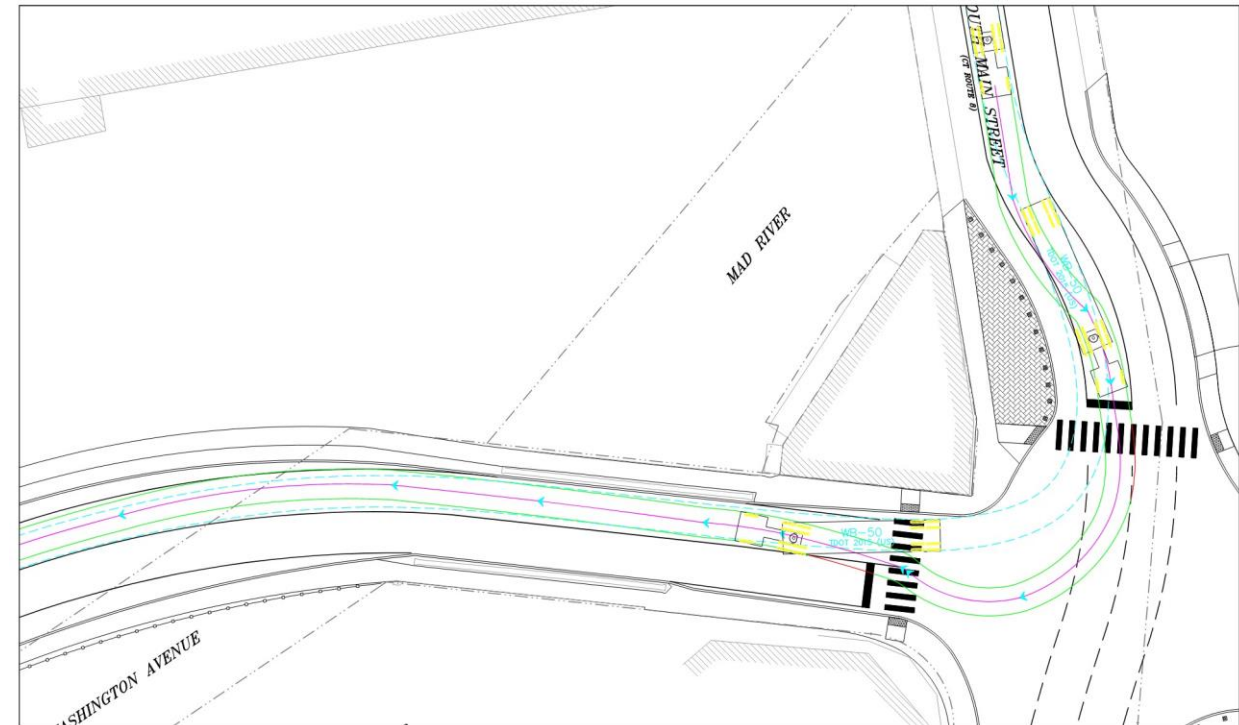


# Improving Intersection Safety and Turning Movements

## WB-50 – EXISTING NORTHWEST CORNER



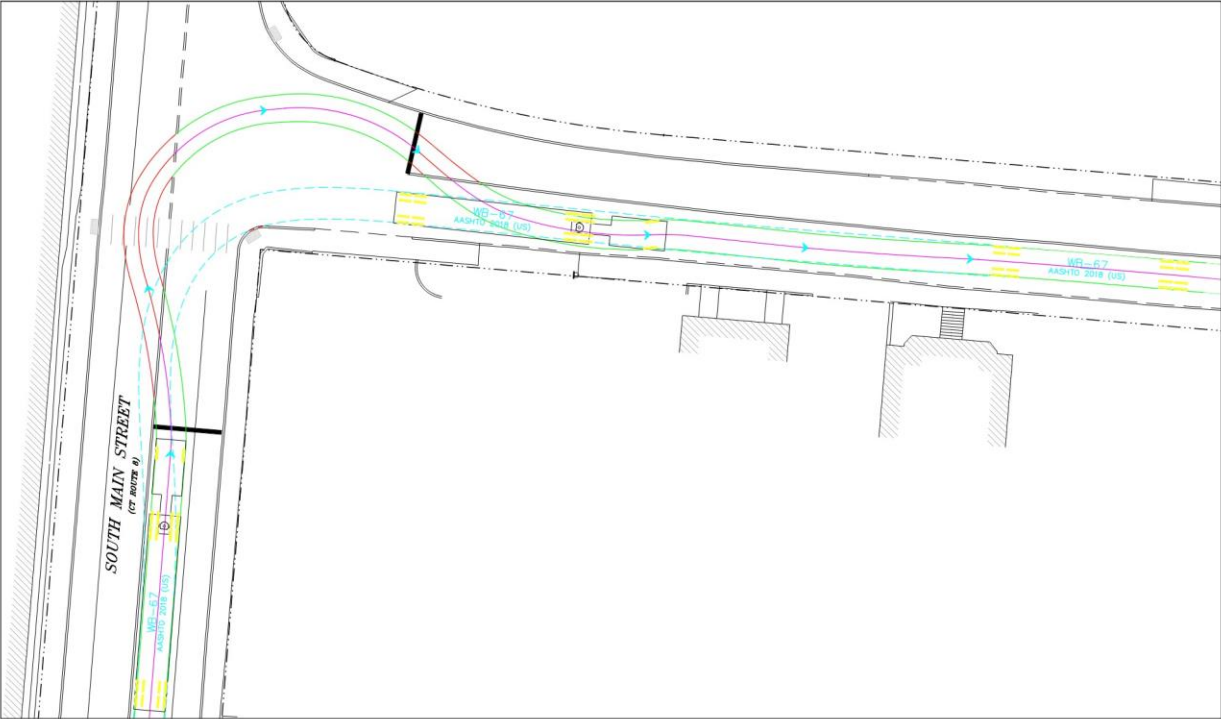
## WB-50- PROPOSED NORTHWEST CORNER



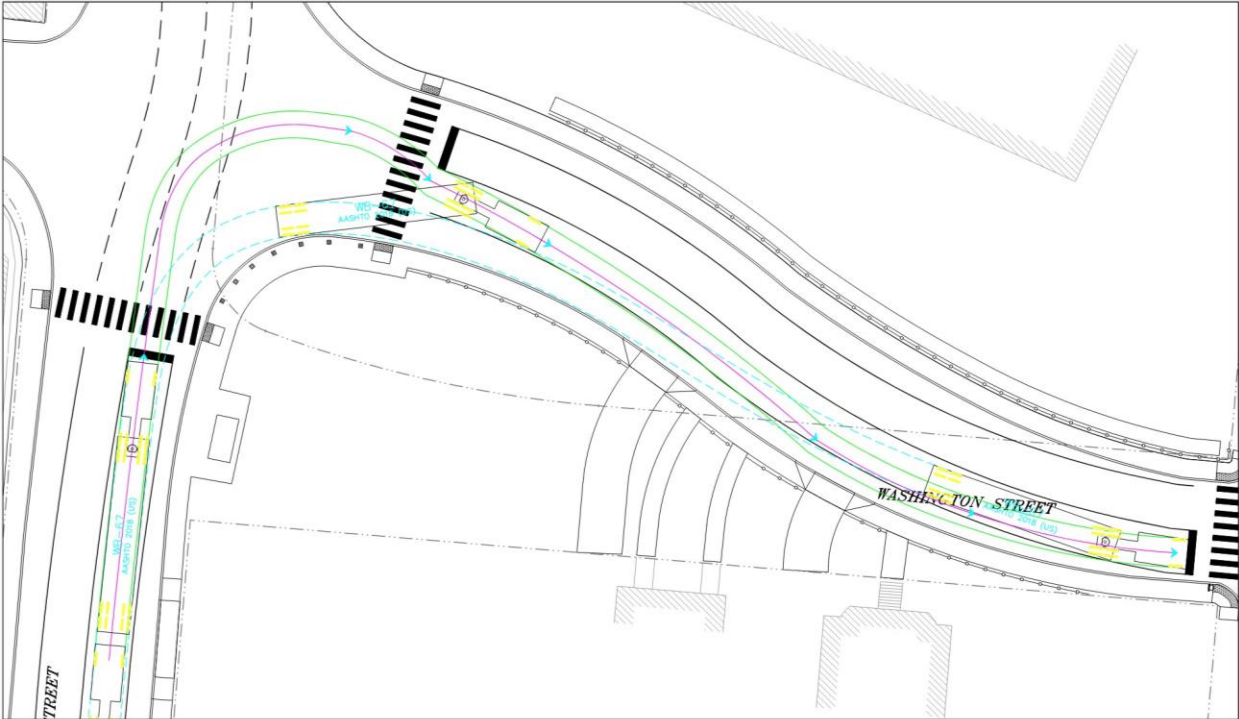


# Improving Intersection Safety and Turning Movements

WB-67 – EXISTING SOUTHEAST CORNER



WB-67 – PROPOSED SOUTHEAST CORNER



# Bus Shelter Enhancements



- ✓ Weather Protection
- ✓ Safety & ADA Accessibility
- ✓ Streetscape & Aesthetic Enhancements
- ✓ Improved Lighting
- ✓ Seating for Waiting Passengers

- Bus Route 470 will include a stop at South Main Street @ Washington Avenue





**Thank you for your time**  
Questions/Open Discussion